



## LIFTBOAT "MACY LYNN"

**Class 105'**  
**USCG CERTIFIED**  
**Official No.: D683249**

### DIMENSIONS

Overall Length	70'
Length (Hull Only)	62'
Overall Beam	46'
Beam (Hull Only)	30'
Hull Depth	7'

### CHARACTERISTICS

Open Deck	1,200 sq. ft.
Maximum Deck Capacity (Afloat)	80,000 lbs.
Maximum Deck Capacity (Elevated)	120,000 lbs.
Deck Strength (max, point load)	750 lbs./sq. ft.

### LEGS

Quantity	3
Length	105'
Diameter	30" O.D.
Wall Thickness	9/16"

### PADS

Length	20' - 8"
Width	7' - 8"
Depth	24"

### CRANES

Quantity	2
Capacity of Port Crane	15 Tons
Boom Length	60' Fixed
Capacity of Stbd. Crane	10 Tons
Boom Length	50' Tele.

### GENERATORS

Two (2) 3-71 Detroit Diesel

### GROSS TONNAGE

Under 100

### LIVING QUARTERS

Berths	12 + (4 Crew)
Satellite TV & Central Air and Heat	
Heads	3
Showers	2
Galley Seats	12
Refrigerators	2
Freezers	2
Ice Maker	Yes
Range	Yes
Washer & Dryer	Yes

### COMMUNICATION/NAVIGATION

VHF Radio	Yes
GPS	Yes
Radar	Yes

### PROPULSION

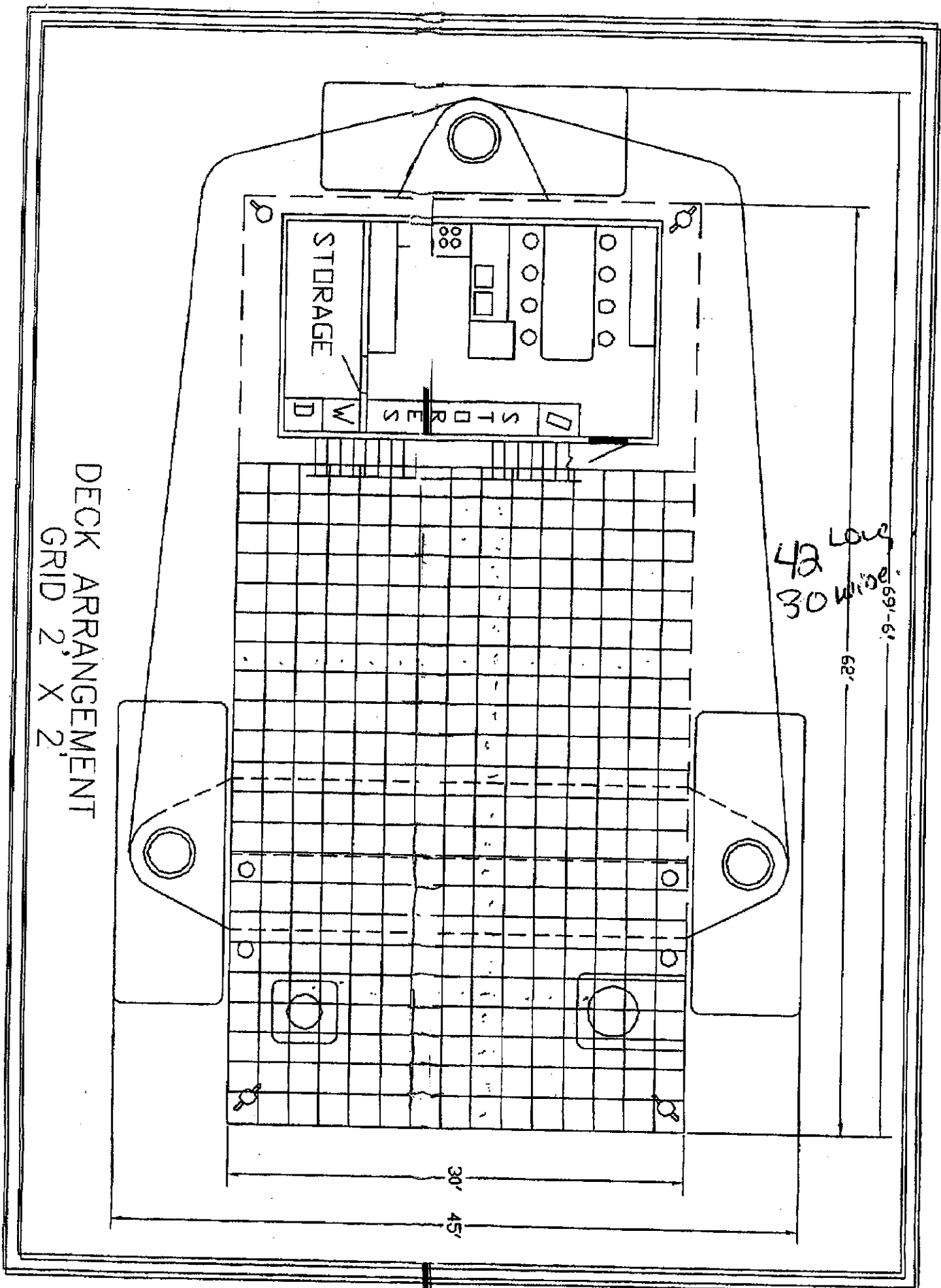
(2) Main Engines Detroit Diesel	8V-71N
Estimated Speed (knots)	8.0

### WORKING CONDITIONS

Maximum Water Depth	60'
Maximum Jacking Seas	5'

### CAPACITIES

Fuel	1,500 Gal.
Potable Water	3,100 Gal.

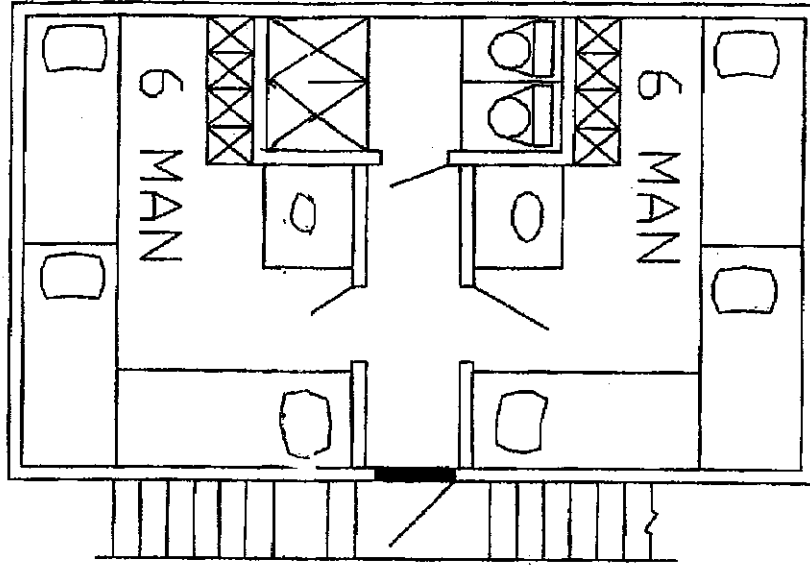


DECK ARRANGEMENT  
GRID 2' X 2'

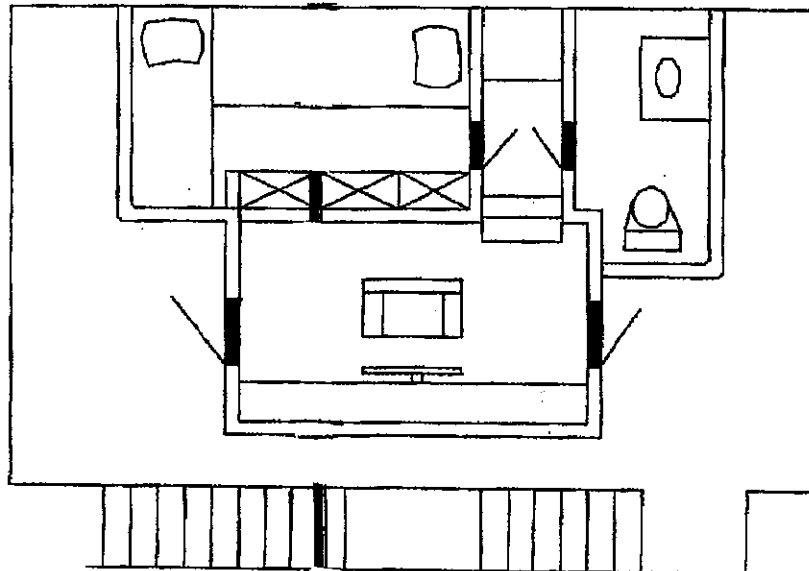
42 Low  
30 wide

QUARTERS ARRANGEMENT

SECOND LEVEL



PILOT HOUSE LEVEL



**EBI C30 DYNAMIC LOAD CHART (1000 lb's)**

Boom Length	Reach (FT)	10	15	20	25	30	35	40	45	50	55	60
<b>30' Boom</b>	Angle	70.0	60.0	48.0	41.0	3.0						
	Capacity	30.0	24.3	18.6	14.6	8.6						
<b>40' Boom</b>	Angle	75.0	68.0	60.0	51.0	41.0	29.0	3.0				
	Capacity	30.0	22.5	17.3	14.0	11.5	9.4	5.4				
<b>50' Boom</b>	Angle	79.0	72.0	66.0	60.0	53.0	45.0	37.0	26.0	3.0		
	Capacity	30.0	20.9	16.3	13.4	11.2	9.4	8.1	6.7	3.9		
<b>60' Boom</b>	Angle	80.0	75.0	70.0	65.0	60.0	54.0	48.0	41.0	33.0	23.0	3.0
	Capacity	30.0	20.0	15.3	12.5	10.6	8.9	7.8	6.7	5.7	4.7	2.8

- \* Static Capacity = Dynamic Capacity x 1.5
- \* These Charts are based on three part reeving with 3/4" Nonrotating EIPS-IWRC wire rope. The winch is 10,000 pound line pull. If the number of reevings is reduced, the maximum capacity of the crane will be limited by the winch capacity.

**PEDESTAL REACTIONS FOR THE TC20-33-60**

BOOM LENGTH	MAX OTM* LB's	FT AXIAL LOAD @MAX OTM (lb's)	MAX AXIAL LOAD (lb's)	OTM @ MAX AXIAL LOAD (FT - LB's)
<b>30' Boom</b>	1,175,160	56,135	101,853	945,041
<b>40' Boom</b>	1,123,712	45,078	103,247	955,372
<b>50' Boom</b>	1,092,442	39,046	103,900	963,912
<b>60' Boom</b>	1,045,322	34,013	104,755	974,627

\*OTM = Over Turning Moment  
Based on twice the static load plus dead load.

**EBI Cranes**

Model: TC 20

**EBI TC 20-33-60 DYNAMIC LOAD CHART (1000 lb's)**

Boom Length	Reach (FT)	5	10	15	20	25	30	33	35	40	45	50	55	60
	Retracted	Angle	82.0	72.0	63.0	52.0	40.0	24.0	3.0					
Capacity		20.0	20.0	15.4	11.4	8.3	6.7	4.0						
Extended	Angle		81.0	75.0	70.0	65.0	60.0		54.0	48.0	41.0	34.0	23.0	3.0
	Capacity		10.0	10.0	10.0	8.0	6.7		5.5	4.7	4.0	3.3	2.6	1.2

\*Static Capacity = Dynamic Capacity x 1.5

\* These Charts are based on four part reeving with 9/16" Nonrotating EIPS-IWRC wire rope. The winch is 5000 pound line pull. If the number of Reeving is reduced, the maximum capacity of the crane will be limited by the winch capacity.

**PEDESTAL REACTIONS FOR THE TC 20-33-60**

BOOM LENGTH	MAX OTM* LB's	FT AXIAL LOAD @ MAX OTM (lb's)	MAX AXIAL LOAD (lb's)	OTM @ MAX AXIAL LOAD (FT - LB's)
33' - 60'	760,435	35,837	69,050	628,779

\* OTM = Over Turning Moment.  
Based on twice the static load plus dead load.